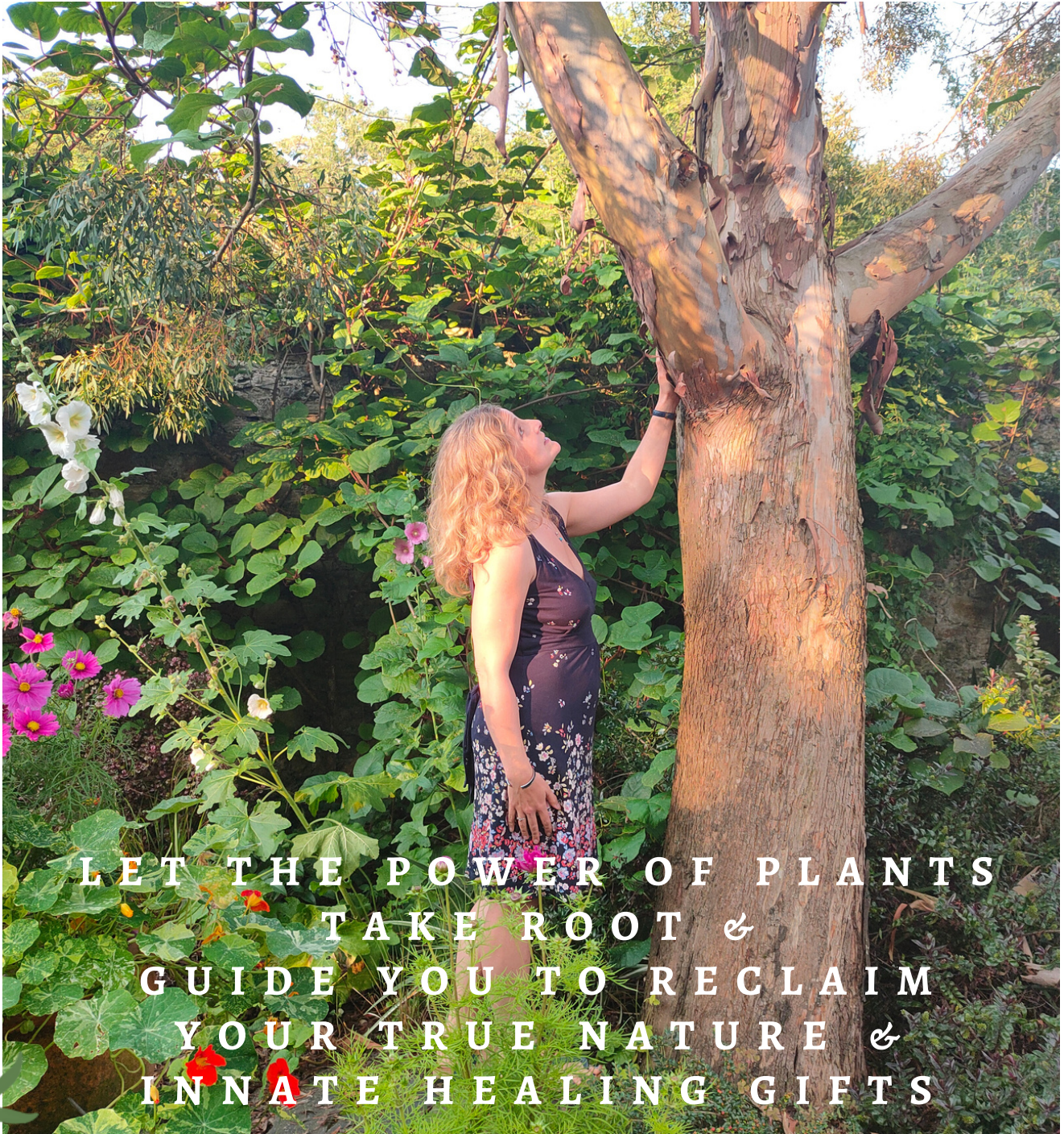


PLANT SPIRIT SUMMER SCHOOL

PLANT WISDOM TRAINING
JUNE 26 - 30 2024



LET THE POWER OF PLANTS
TAKE ROOT &
GUIDE YOU TO RECLAIM
YOUR TRUE NATURE &
INNATE HEALING GIFTS

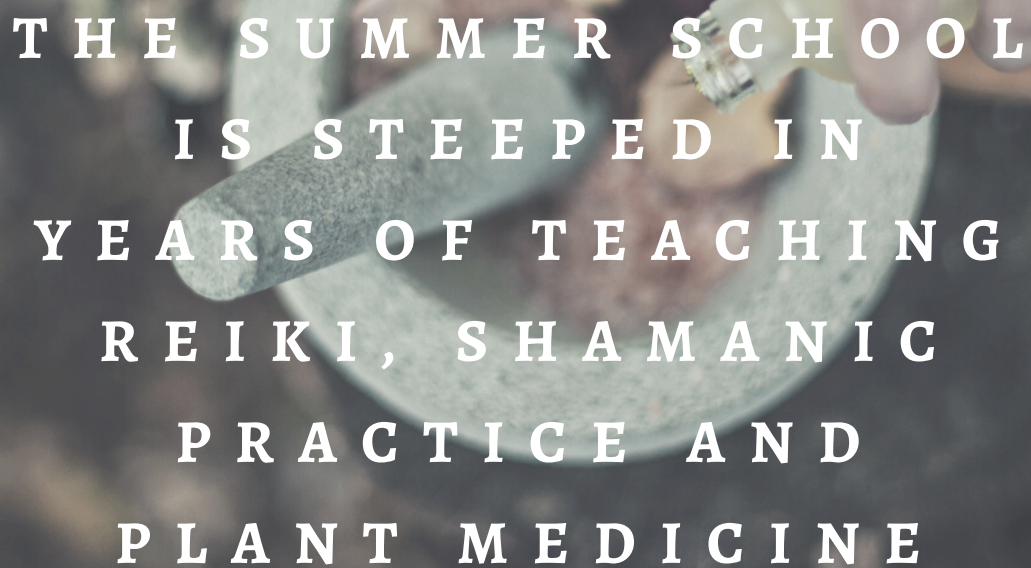


**ARE YOU A
GARDENER, HERBALIST,
NATURE LOVER OR
WELLNESS PROFESSIONAL
WHO LOVES PLANTS AND
DESIRES TO...**

- Learn more about the energy of plants and plant consciousness?
- Understand how to communicate directly with plants?
- Trust your intuitive gifts more deeply?
- Feel more grounded with a deeper sense of who you are and what you can share?
- Live from a higher frequency and create a life with more meaning, peace and connection?

If so, retreat into the sacred and magical garden space of Gardener's Cottage.

Join us and meet the plants to play and immerse yourself in the transformative power of the green kingdom.



THE SUMMER SCHOOL
IS STEEPED IN
YEARS OF TEACHING
REIKI, SHAMANIC
PRACTICE AND
PLANT MEDICINE

LEARN HOW TO COLLABORATE WITH THE WISDOM OF NATURE

This 5 day practical immersion will guide you on an experiential journey in which you will learn from the plants themselves.

Reconnecting with the plants and nature is a healing journey that brings you into alignment with your true nature. You may naturally find yourself healing blocks, gaining confidence, trusting your intuition more, enhancing what you innately know and feeling ready to bring out this wisdom to benefit yourself and those around you.

The Summer School offers support and facilitation to deepen your connection to your intuitive knowing and the plants and elements of nature that surround you. The first part of the Summer School will help you immerse yourself in the language of nature and open your intuitive senses to meet plant allies to assist your personal healing.

Part two will teach you how to weave the plants into your current life and therapeutic practice (if you have or want to create one) to share the healing power of nature with others. It will bring clarity to your soul calling and help you reclaim your power to embrace the way nature's intelligence expresses itself through you.

For Reiki Level two practitioners, on completion of the full summer school together with relevant case studies, you may obtain certification as a **Plant Spirit Reiki Practitioner** if you wish.

WHAT'S INVOLVED?

The Plant Spirit Summer School is an opportunity to:

- Disconnect from your regular life and immerse yourself in a beautiful garden space
- Communicate directly with plants and discover their innate nature
- Understand the language of plant consciousness
- Understand and work with your intuitive gifts more deeply
- Practice and share simple plant spirit healing techniques and develop your own intuitive style.
- Make flower essences or other plant medicines for personal, emotional and energetic healing
- Learn about key plant allies, herbal actions and preparations.
- Develop your plant relationships on a deeper level, as helpers for your professional practice, if you have one, to help others experience the healing power of plants and nature.
- Feel connected, grounded and supported on your path.
- Reconnect to your own unique nature and expand into the gifts you are ready to share.





WHAT'S INCLUDED:

- Practical teaching and plant immersion exercises.
- All lunches (4) and 2 evening meals
- All learning materials.
- One online follow up class over the summer.
- Group and partner work, self-study, essence making and solo plant exercises.
- Opportunity for Certification as a Plant Spirit Reiki Practitioner (on receipt of acceptable case studies) if desired.

THIS IS FOR:

- Those interested in plants, plant consciousness and connecting with plants on a deeper level.
- Anyone familiar with Fay's work or books.
- Shamanic practitioners who are interested in plant connections.
- Health and well being professionals wishing to work with plants in their practice.
- Reiki Level 2 practitioners or above who are interested in Plant Spirit Reiki Practitioner Training



SUMMER SCHOOL TEACHING DATES

- Day 1:** June 26 Wed 6- 8pm
- Day 2:** June 27 Thurs 9 – 5pm
- Day 3:** June 28 Fri 10 - 5pm
- Day 4:** June 29 Sat 10 – 8pm
- Day 5:** June 30 Sun 10 - 2pm

Plus: One online support class over the summer TBC.

(Timings are approximate to help you plan your time and travel. All timings are subject to change and will be finalised 2 weeks before start date).



IMPORTANT INFORMATION

Being trained in Reiki is not a pre-requisite for joining the summer school. However, those wishing to obtain the Plant Spirit Reiki Certification, and work with Plant Spirit Reiki professionally will need to be trained in Reiki level 2 and above. (There is also an additional fee for certification as outlined below).

“ I had a wonderful week at Gardener's Cottage - 'The Chalice Wells of Scotland'. The energies and Plants are amazing and were a joy to work with! I found The Plant Spirit Reiki course very enlightening. I also loved the Qigong, treatments and meditation sessions. I left feeling very inspired and full of ideas of how incorporate the essence of plants more into my work and daily life. **Catherine, Participant 2022** ”



SUMMER SCHOOL LOCATION

The Summer School takes place at Gardener's Cottage at Crombie Point in Fife, Scotland.



Getting here Options

Fly or train to Edinburgh – Edinburgh airport is 30 minutes away.



From Edinburgh city centre take a train to Dunfermline and then a taxi or bus from Dunfermline to Torryburn, it's then a 12 minute walk.

<https://www.stagecoachbus.com/plan-a-journey>

<https://www.scotrail.co.uk/>



If you have your own transport we can provide you with exact directions.

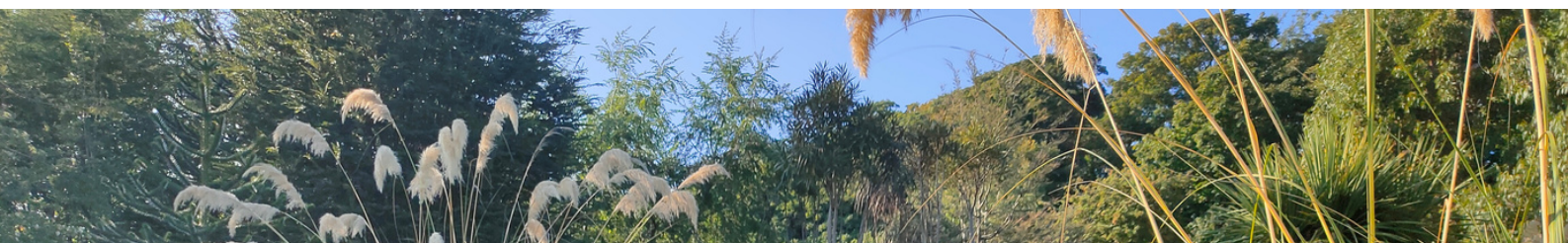


Accommodation is not included in the fees for the summer school.

Many options are available from £70 per night and have been pre-booked for students. Please ask. Early booking will ensure more options and price points. You can also look at booking.com or AirBNB websites.

Nearby villages (10 minutes drive): Limekilns, Charlestown, Culross, Crossford or the larger city of Dunfermline (which is accessible by bus.)

Staying in Edinburgh and travelling each day would also be possible.



TRAINING FEES

June 26 - June 30

Teaching and materials

Lunches, snacks and herbal teas during course. Plus 2 dinners.

1 follow up online class.

TOTAL SUMMER SCHOOL:

£880

**EARLY BIRD BEFORE
MARCH 31**

£775

**DEPOSIT
TO SECURE PLACE:
£250**

**BALANCE DUE:
MAY 29**

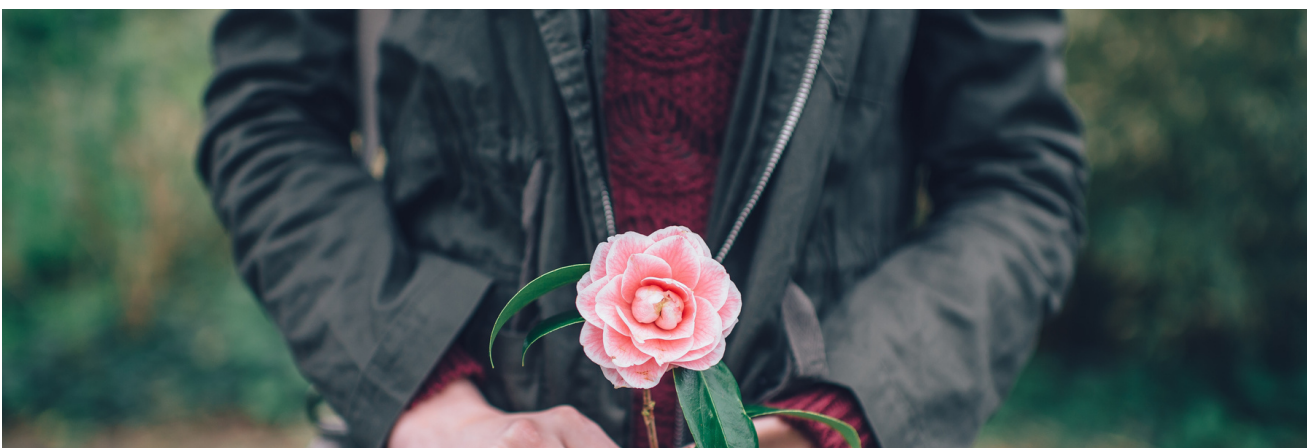
PLANT SPIRIT REIKI PRACTITIONER CERTIFICATION

Additional fees for those wishing to certify to become a Plant Spirit Reiki Practitioner are: £200

This includes a review of case studies and an additional one to one zoom session. Fee is due prior to case study review.

Payment accepted via bank transfer or via paypal (though you will pay fees)
Get in touch to pay your deposit.

“Gardener’s Cottage is truly a little piece of heaven on earth. The whole experience was awe-inspiring from start to finish. Fay is a very natural teacher who generously shares her wisdom and experience with her students. The space she holds not only enhanced my learning experience but gave me much needed insight into a part of me I had forgotten. Fay is warm, welcoming and nurturing. Thank you Fay for facilitating a beautiful experience. **Ann Halstead, Participant 2022**”



FAY JOHNSTONE



YOUR TEACHER & FOUNDER OF THE PLANT SPIRIT REIKI SCHOOL

Over 20 years of Reiki connection plus more than 10 years of Shamanic practice, herbal training and passion for plants is brought together in this training.

Plant Spirit Reiki is a natural progression of my Reiki and Shamanic teachings woven together with the guidance and power of the green kingdom. The plants have brought me here and it's now time to deepen the journey so that the teachings from Reiki, the earth and the plants can come forward through me and those who participate in this training. This is a new chapter for my energy practice and this training is the doorway for all those earth conscious healers who are willing and ready to make it their own.

If your practice or the plant whispers are calling you to go deeper and you would like to work with me on this training, to deeply listen and be inspired on a journey that will transform you, then get in touch at fay@fayjohnstone.com to arrange a zoom call in which I can answer your questions.

There are 8 places open, is one of them yours?

A lush garden scene with a stone path, various plants, and trees in the background. The path is made of large, flat stones and is surrounded by green grass, yellow dandelions, and purple flowers. In the background, there are tall trees with green leaves and a wooden structure, possibly a well or a small building. The sky is blue with some clouds.

WHAT ARE THE
PLANTS CALLING
YOU TO DO?

HOW CAN YOU BRING
THEIR POWER TO BENEFIT
YOUR PRACTICE AND
COMMUNITY?

WHEN ARE YOU GOING TO
STEP INTO THE ROLE THAT
THE EARTH NEEDS YOU
FOR?

WWW.FAYJOHNSTONE.COM